



RICE International Relief Organization Corp. Inc,

910 S. El Camino Real Suite D, San Clemente, California 92672 USA

Tel: 949.310-5775 www.ricereliefcorp.org

December 2005

RICE International

WAYS YOU CAN HELP THIS MONTH

- Buy a Mule for \$ 575
- Volunteer for the next Mississippi Relief Team
- Collect Medical Supplies for RICE teams .
- Be an office or warehouse volunteer in California or Hawaii
- Make a financial donation to RICE for Burma, Sierra Leone or Mississippi
- Connect us with your church
- Form a Prayer team

RICE International Relief Corps



Karen woman and child in Eastern Burma

Letter From the President

What if you could be a part of a program which literally doubles the amount of medical and relief aid being distributed into a country like Burma, currently torn by war, ethnic violence and human rights abuses ? Would you be willing to help get supplies to them?

What if you could be a part of the legacy which helps to spread God's grace and mercy to countries historically "closed to foreigners" like China and Laos? Would you do it?

Just got back.....

I just returned from two weeks inside Burma where I participated in the Free Burma Ranger (FBR) training program for their relief teams. This program trains young committed hill tribe men and women (Karen Shan, Karenni and others) who serve on relief teams inside Burma. The team's objective is to protect and serve the Internally Displaced People IDP's in medical and pastoral care, landmine detection and dismantling, human rights documentation and defensive security. They do all this under service to God with a strong faith, hope and love for their people suffering persecution at the hands of the current military dictatorship. What an amazing group I got to know and humbly serve.

Our immediate mission is to care for those IDP's that need our help. Starting in January we will partner with **Global Refuge** to set up a distribution system supplying medicines, foods and things like blankets to the IDP's . Within Burma we utilize on-ground networks like FBR, backpacker medical teams from Dr. Cynthia's clinic and nurse associations like SWAN. We will do practical things like buying mules to carry loads . In January we are sending a medical team into the north to provide medicines and care at two Shan refuge camps.

Our long term plan is to create "**Outposts**". We will provide medical care and supplies, training and education throughout Asia. We need your support .

I am really looking forward to 2006 . Let's see what we can do together
Come be a part of the answer !!

RICE Serves The Forgotten State-Mississippi

A lot of press recently on the slow progress of relief in places like Pass Christian, Biloxi, De Ibeville Mississippi. Recently RICE had a volunteer team based in this area. For more information see page two

Dorothy Kropf
Janet Orcutt
Marlane Puzio RN
Christine Shook

Special thanks to all our volunteers:

Steve Lesenring
Brain Jensen
Dr Doug Trinh
Jan Lake RN
Scott Baird
Leslie Lockridge
Colin Lockridge
Anna Bantigue RN
Sarah Lau



Meds On Mules-You Donate the Mule

Burma is a country full of suffering—No roads, no vehicles, no power very basic in its reality. This is a country which needs our help. We will serve in two ways:

The **Outpost Project** is a working partnership between several faith based relief organizations, local NGO's, and churches who desire to serve the IDPS of Burma by providing medical care and supplies, education and training. The long term vision of the **Outpost** is to create a center point for aid and missions in a safe haven for the South East Asia Region including Laos, China and beyond. This is a project in which you and RICE can make a tremendous impact into the overall aid and relief going to the needy children, the forgotten and the displaced in the area.

Meds On Mules is our second project with a goal of getting medical supplies from a Northern Thailand location and into Burma. Mules are the only means of transporting supplies across the border. We will support that effort by providing more mules. This program will double the amount of aid going into Burma



RICE makes a donation of medical supplies for upcoming mission to Partners Relief and Development founder Steve Gumaer in Thailand in November.

Have you ever dreamt of owning your own mule????

Well, let us help you fulfill your dream!!!

We know that mules aren't the most beautiful or cuddly animal known to man, but in Burma, a mule is the most welcome and valuable animal!

Each mule in Burma can carry 200 pounds of food, medicines, blankets and other necessities to women and children who hide in the jungle or live without anything in the IDP camps.

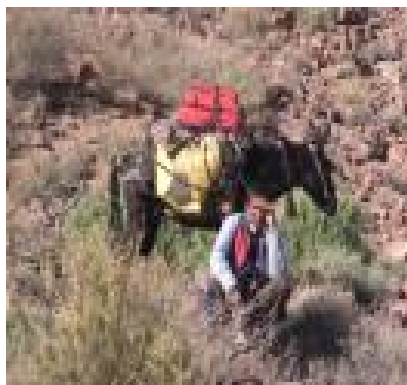
We can DOUBLE the total amount of aid to Burma by providing more mules to this region through our

Meds On Mules Program

You (your business, Sunday school class, VBS, etc.) donate the money (\$575) and we buy the mule.

We'll even let you name him!

To participate in "Meds On Mules" Program



Send a note with a check made out to RICE International Relief Organization for \$575 with "**Meds on Mules**" written on it or use paypal from our website www.ricereliefcorp.org .

Send an email to read.taylor@ricereliefcorp.org with your requested names for the mules and the name and address of who is buying the mule and we will send a tshirt to express our thanks.

Love each other, unite and work for freedom, justice and peace.
Forgive and don't hate each other . Pray with faith, act with courage and never surrender
FBR Motto



We recently completed our 2nd volunteer trip to the hard hit region where Hurricane Katrina landed. We continue to be committed for the long term, and are building a respected presence in the greater Biloxi-Ocean Springs area. During October and November, we had 18 volunteers from California and Hawaii over about a two week period. We completed several projects and as always worked with local organizations including the Red Cross, local churches Christos Victor Lutheran, and Gautier Presbyterian serving their needs.

Recent Efforts

I am so proud of the work of our volunteers and supporters . With your help we served the needs of the region in the following ways:



RICE Volunteer Jan Lake RN prepares vaccination

Mississippi Relief

Free Medical Clinics-RICE repaired and set up a free clinic which recently opening its doors. RICE volunteers from Bristol Medical clinic served here during this difficult time. We set up a free medical clinic at a local gathering place for many of the poor and needy in Gautier area (Sonny's).

Neighborhood Outreach Program Our volunteers rode out with the Red Cross as a team into the neighborhoods giving vaccinations, food and supplies and talking to the locals. We conducted our own neighborhood outreach programs into places like Pass Christian, Biloxi, de' Iberville some of the most devastated areas.

Backpacks, Toys and School Supplies to Children of the local Communities-Utilizing donations from Honolulu First Presbyterian and Calvary Chapel Capistrano we distributed over 150 backpacks filled with great stuff and toys to the local day care of Pass Christian, the children of the Ocean Springs area and at Sonny's in Gautier.

Home Build Back- "Mucking" is the new favorite term for pulling out moldy dry wall for a couple of our young volunteers. They got in and did a great job on several homes in the area identified by local churches. While we were there we also helped a young staff member at the YMCA ,where we stayed, and several families in the area whom we met along the way.

Trauma Counseling-We were able to meet on the streets and in the shelters with many of those suffering from their extensive losses. One-on-one outreach and initial professional care was provided by a team of volunteers and a

rained Mental Health professional .

Letters of Hope-As many of you know RICE has been handing out personal handwritten letters from listeners of the radio show *Haven of Rest* to those affected by Katrina. We were able to give out over three hundred of these many from kids to kids and other personal notes meaningful and well received by those living in the shelters.

Thanks to our friends at King Benevolent Fund, Essex Property Management, Bristol Medical Clinic, Christos Victor, Morning Star Exploration, and Advantage Imaging Supply who provided volunteer staff, funds and donations in kind for this much needed work.

Emergency aid and Humanitarian relief can be overwhelming and complex sometimes but what it really comes down to is what happens one on one . A volunteer helping out in some small way on that day at that moment ...whatever it takes.

Donate

RICE International Relief Corporation
I.R.S. registered 501(C) (3) tax-exempt.

Please make donations to:
RICE International Relief Corp.
910 S El Camino Real Suite D
San Clemente California USA
92672

Hawaii Conference and Benefit for The Outpost Project

October marked the first RICE conference in Hawaii . Our focus was he **Outpost Project**. This was a good chance to get all the team members interested in Northern Thailand work for Burma's IDP'S . We hope to have many of these meetings in the future. We topped it off with a fundraising concert with the Christian Rock Band **Peculiar People**.

They were great!! We also had some fun. See Raul's photo.....Thanks to First Presbyterian Honolulu for use of their facility. Thanks to our volunteers, and to Free Burma Rangers, Partners Development, Asian Tribal Ministries, and Abundant Life Academy for attending.



Raul Villasenor RICE Chaplain



Our New Address

Primary Business Address
 910 S. El Camino Real Suite D
 San Clemente California
 92629 USA

Phone: 949-310-5775
 E-mail: riceint@hotmail.com

Thanks to Morning Star Exploration for the space

**RICE INTERNATIONAL
 RELIEF CORPS**

We are on the web
www.ricereliefcorp.org

RICE is dedicated to providing humanitarian relief in the US and around the world . We serve the poorest of the poor, those forgotten, the widows and the orphans needing care. We serve now and bring hope for a better future. We do this by providing food, shelter, medical supplies, free medical clinics and whatever it takes in any situation to get the job done.

We build teams and partner with the best organizations so that every day we can improve the way in which relief is provided.



3 Karen Children inside Burma

We need your help. Come be a volunteer.



Information
 Contact- Read Taylor
 RICE International Relief Organization
www.ricereliefcorp.org
read.taylor@ricereliefcorp.org
 Cell Phone 949 310 5775

Introducing ...Beyond Borders Coffee

At RICE we drink a lot of coffee just too keep going. I hope you do too because in January we will market a high quality brand of coffee under the new **Beyond Borders** name.

The name **Beyond Borders** comes from looking beyond our own personal borders stretching ourselves as well as going internationally to help those in need.

The company will incorporate in Oahu Hawaii (coffee connections and a strong base). It will support and guide the RICE efforts to grow, roast and sell coffee that in our project areas around the world

The concept is one in which the proceeds of the sales go back into relief projects for things like building orphanages, water purification systems and medical clinics. In the long term we will develop and train small business enterprise in order to give back higher wages and ownership to those in the field to those working so hard.

Our first venture will be available through direct sales of 8 oz bags on our website. The coffee beans we will sale initially come from the Waialua Farms of the North Shore Oahu. They are a high-grade Arabica Guatemala Typica from an original Kona plant....what all that means is it is a good coffee.

We will produce a medium and a dark roast so you can decide what is best for you. Visit our website in Mid January and give our beans a try. Tell all your caffeinated friends....lets go **Beyond Borders!!!**



The terrain , elevation, soil and climate in Northern Thailand is great for coffee farms.

